

Default Risk on Derivatives Exchanges:

Evidence from Clearing-House Data

Robert A. Jones*

Christophe Pérignon**

May 2008

Abstract

In this paper, we analyze empirically the clearing house exposure to the risk of default by a clearing house member. Using actual daily data on margins and variation margins for all clearing members of the Chicago Mercantile Exchange's clearing house, we identify many occurrences when the member's daily loss exceeds his posted margin. Furthermore, we find that the major source of default risk for a clearing member is proprietary trading and not trading by customers. In order to quantify the default risk exposure, we provide a characterization of the tail risk of the clearing house using Extreme Value Theory. We then design and price a realistic insurance contract covering the loss to the clearing house from default by one or several clearing members. We investigate the impact on the insurance premium of including data from the Black Monday of 1987 in our sample. Our empirical analysis also allows us to put a dollar amount on the service provided by the Federal Reserve, which is the implicit insurer of the clearing house.

JEL classification: G13, G18

Keywords: Derivatives Exchanges, Clearing House, Default Risk, Systemic Risk

* Simon Fraser University, Vancouver, Canada. ** HEC Paris, France. We thank the Risk Management Department of the Chicago Mercantile Exchange for providing us with the data. We are grateful to David Bates, Laurent Calvet, Francois Derrien, Thierry Foucault, Thomas Gilbert, Dusan Isakov, Paul Kupiec, Jacques Olivier, David Thesmar, and Christophe Villa, as well as participants at the 18th Annual Derivatives Securities and Risk Management Conference and seminar participants at CORE-UCL and HEC Paris for their comments. Emails: rjones@sfu.ca (Jones), perignon@hec.fr (Pérignon). Contact Author: Christophe Pérignon, Finance and Economics Department, HEC Paris, 1 Rue de la Libération, 78351 Jouy-en-Josas, France. Tel: (0033) 139 67 94 11, Fax: (0033) 139 67 70 85.

1 Introduction

Derivatives contracts, since they call for future delivery or payments, are clearly exposed to the risk of counterparty default. On organized derivatives exchanges, the central counterparty clearing house (hereafter CCP) greatly reduces this concern by becoming legal counterparty to every transaction undertaken by a clearing member (hereafter CM).¹ As an intermediary, the CCP does not incur market risk but it does bear default risk (also called counterparty risk, or nonperformance risk) vis-a-vis their CMs. Indeed, a payment default occurs if the daily loss of a CM's total position exceeds his margin and he does not pay the deficiency on time.²

In this paper, we analyze empirically the default risk of CM using actual data of daily gains and losses of all the CMs of the Chicago Mercantile Exchange's CCP.³ Characterizing the probability of a default by a CM, as well as the magnitude of the resulting loss, is of great interest to many financial market participants. First in line is the CCP since, in the event of a CM default, it will need to utilize its own resources to compensate the winning CMs, and once resources are exhausted, it may also default. Other concerned market participants include the non-defaulting CMs because of the mutualization of losses through loss-sharing rules. Individual investors trading through the defaulting CM can also be at risk since, as made clear by Jordan and Morgan (1990), they are not contractually protected by the CCP – especially if the default of the CM is due to the loss of another customer trading through the defaulting CM. The parent companies of the CM are also directly concerned since they provide the financial guarantee necessary to the CM to operate. Furthermore, as implicit and explicit insurers of the CCP against default, central banks and insurance

¹The clearing activity consists in confirming, matching, and settling all trades on an exchange. On most derivatives exchanges, only a subset of market participants (i.e., the CMs) can directly trade with the CCP whereas all non-CM participants have to route their trades through a designated CM. Some end-customers deal directly with a CM (e.g. non-CM institutional investors, hedge funds) while others trade through a broker who still needs to route the trades through a CM. See Knott and Mills (2002) for a comprehensive review of the risks faced by CCPs.

²Our definition of default does not include all occurrences when a CM does not meet a margin call. As long as the balance of the margin account is non-negative, the position of the CM can be unwinded at no cost to the CCP and other CMs. It is only when the balance is negative - the money has already been lost and needs to be transferred immediately to the winning party - that failing to meet a margin call is perceived as a default.

³The CCP is a division of the Exchange, i.e., Chicago Mercantile Exchange Inc. On December 2001, the Exchange became a wholly owned subsidiary of Chicago Mercantile Exchange Holdings Inc. (CME Holdings). The Class A shares in CME Holdings represent equity and voting rights. The Class B shares represent equity and voting rights, as well as a membership representing trading rights in the Exchange. Membership to the Exchange is limited to 625. The main privileges of the Exchange members are to access the trading floor, to act as a trading broker, and to receive fee from clients. Exchange members that are not CM must pay a fee to have their client, as well as their own, trades cleared by a CM.

companies may find the present analysis informative.

Although actual defaults by a CM have remained infrequent (Examples of CCP having experienced a CM default are US Options Clearing Corporation in 1973, New York Mercantile Exchange, Inc. in 1976, Commodities Exchange Inc. in 1985, and US Board of Trade Clearing Corporation in 1992), concerns about default risk in the clearing process have recently increased for a number of reasons.⁴ Indeed, recent years have witnessed an extraordinary expansion of the derivatives markets, which was fueled in part by the rise of the hedge fund industry. In parallel to this increase, the emergence of mega-exchanges resulting from mergers (e.g. Chicago Mercantile Exchange & Chicago Board of Trade, EURONEXT & LIFFE) leads to fewer and bigger clearing facilities.⁵ As a result, CCPs concentrate an increasing amount of risk which raises substantial systemic risk concerns. As recently noticed by Federal Reserve Governor Kroszner (2007), CCPs are now clearing new products, some of which being illiquid or very complex, and are frequently involved in cross-border clearing activities. In response to this growing concern, a number of CCPs have purchased default protections from insurance companies to further strengthen their financial safeguard package. Recent examples include the CCP of the New York Mercantile Exchange, Inc., the CCP of the Sydney Futures Exchange, the Norwegian Futures and Options Clearinghouse, and OMX Nordic Exchange Stockholm.⁶

Over the years, CCPs have assembled a battery of safeguards to control their default risk exposure. First, CMs are subject to financial and capital adequacy requirements to guaranty their creditworthiness. Second, CCPs impose a system of margining which ensure that obligations of both CM and their customers are collateralized. Both house margin accounts and customer margin accounts are adjusted daily to reflect changes in the mark-to-market value of positions. These daily aggregate gains or losses are called variation margins. If at the end of a given day, the margin account balance falls below the required level then additional margins must be posted overnight.⁷ In most cases, CMs are permitted to post a margin on the aggregate *net* position for their own house positions but they are

⁴Several CCPs have actually defaulted in France, Honk Kong, and Malaysia. See Hills, Rule, Parkinson, and Young (1999) for details.

⁵Interestingly, mergers of *clearing facilities* sometimes anticipate mergers of *exchanges*, e.g., Chicago Mercantile Exchange & Chicago Board of Trade.

⁶In their 10K form filed in September 2002 to the Security Exchange Commission, the Chicago Mercantile Exchange stated that they were in the process of obtaining default insurance. However, to our knowledge, this has not materialized yet.

⁷Intraday margin calls are possible in particularly volatile market conditions. Extraordinary intraday margin calls occurred three times on October 19th, 1987, and ten more times in the remainder of October (Fenn and Kupiec, 1993). Gibson and Murawski (2007) show theoretically that margining can increase default risk during periods of market stress.

required to deposit margins with the CCP sufficient to cover the *gross* positions of their customers. Furthermore, positive balances in the house account are typically pledged to offset negative balances in the customer account, but not the reverse.

The academic literature on default risk on derivatives exchanges has developed concurrently with derivatives markets. A first strand of the literature focuses on the probability of facing a daily loss greater than the actual margin and, in turn, that additional funds must be raised (Figlewski, 1984; Gay, Hunter and Kolb, 1986; Knott and Polenghi, 2006) and on the expected value of additional funds that need to be raised conditional or not on additional funds being needed (Bates and Craine, 1999). Other authors propose models of optimal margin that lead to a given target probability of a loss in excess of the margin (Booth et al., 1997 and Cotter, 2001), that minimize the total cost of margin, settlement, and default costs (Fenn and Kupiec, 1993), that reflect the option to default on a futures position (Day and Lewis, 2004), or that take account of the CCP risk aversion (Cotter and Dowd, 2006). Recently, Shanker and Balakrishnan (2005) use the framework of Brennan (1986) to set the optimal margin, capital, and price limits that will minimize the cost of clearing firms and simultaneously provide protection against default risk to the CCP. Differently, Bailey and Ng (1991) estimate the default premium in the futures prices of precious metals and show that nonperformance risk has significantly affected futures prices during the 1979-1980 "Hunt Brothers" episode.

A common feature of the aforementioned studies is that they all focus on an individual futures position. As a result, their conclusions do not directly apply to CMs since, at any point in time, they maintain a *portfolio* of positions with complex diversification effects. Indeed, a CM's aggregate portfolio includes different derivatives types (e.g., futures and options), offsetting positions (i.e., long and short), different underlying assets, and various maturities.⁸ Moreover, some of the positions are proprietary positions of the CM while others come from all the end-customers who access the derivatives exchange through this CM.

Portfolio-based margin requirements are computed in most CCPs (including the Chicago Mercantile Exchange) using the Standard Portfolio Analysis of Risk (hereafter SPAN) margining system. SPAN evaluates the risk of an entire futures/options portfolio and computes at the end of each trading day its aggregate margin requirement called performance bond.⁹

⁸In an early attempt to analyze the default risk of a CCP, Gemmill (1994) highlights the dramatic diversification benefit from combining contracts on uncorrelated or weakly correlated assets.

⁹On the Chicago Mercantile Exchange, performance bond can be in cash (ten acceptable currencies),

To arrive at a margin level, SPAN considers a series of scenarios representing potential changes over a one-day horizon in the underlying security's price and volatility. The empirical performance of SPAN has been tested by Kupiec (1994) for selected portfolios of S&P 500 futures and futures-options contracts. He finds that, over the period 1988-1992, the historical margin coverages exceed 99% for most considered portfolios. Furthermore, Kupiec and White (1996) find that SPAN provides similar risk protection than the alternative margining system, "Reg T", but with substantially smaller collateral requirements.¹⁰

The present study is the first one to analyze the default risk of CMs using actual daily performance bonds and variation margins. Our dataset includes the performance bonds and variation margins for all CMs of the Chicago Mercantile Exchange's CCP over the period January 4th, 1999 - December 31st, 2001. Chicago Mercantile Exchange is the largest and most diverse financial exchange in the world for trading futures and options. Its CCP handles more than 92 percent of all futures and options contracts traded in the U.S. We conduct an in-depth statistical analysis of the performance bonds (B), variation margins ($V > 0$ corresponds to a gain and $V < 0$ corresponds to a loss), and of their ratio V/B , i.e., the relative profit-and-loss. We are particularly interested in the left tail of the distribution of the V/B ratio since a ratio smaller than -1 indicates a situation in which the CM has an incentive to default. Over our three-year sample period, we identify 68 occurrences when the daily loss in the house account exceeds the posted margin. Almost one third of our sample CMs have experienced a margin-exceeding loss and in one case the loss was as high as 173% of the posted margin. We also find that the value of the V/B ratio seems to be independent of the size of the performance bond. Furthermore, margin-exceeding losses are much less frequent on the customer side, with only four occurrences in total. As a result, the major source of default risk for a CM is proprietary trading.

In this paper, not only we quantify the default risk but we also show how this risk can be hedged through the purchase of a default insurance. We design, and price, a realistic insurance contract covering the loss to the CCP from default by one or several CMs. The insurance policy is based on the accumulated default losses over a T -year insured period, subject to both a policy deductible and an overall payout limit. Valuation proceeds in

U.S. Treasuries, letters of credit, selected stocks from the S&P 500 index, selected sovereign debt, mortgage backed securities, and several types of notes and bonds from selected financial institutions. As of June 30, 1998, the Chicago Mercantile Exchange's CCP held a total of \$3.771 billion in house margin funds and \$7.949 billion in customer margin funds. U.S. Treasuries account for 89.76% of house margin funds, letters of credit for 4.97%, and cash for 0.17%. Corresponding percentages for customer margin funds are 83.46%, 12.96%, and 0.61%, respectively (source: CFTC, 1998).

¹⁰Kupiec (1994) and Kupiec and White (1994) do not use actual historical SPAN margins but hypothetical margins generated using a model that mimics the SPAN system.

two steps. First, we empirically model the left tail of the V/B ratio using a generalized Pareto distribution. Second, the actuarial insurance premium is determined by Monte Carlo simulations of the joint default process and payout under the policy. Furthermore, we investigate the effect on the fair value of the premium of including in our sample data from October 19th, 1987. We find that including the Black Monday dramatically impacts the fair value of the default insurance premium.

Our approach drastically differs from previous attempts to compute the fair value of an insurance against losses from futures trading. Bates and Craine (1999) compute the daily premium on an insurance policy that would cover the loss induced by a futures price change exceeding the margin. Using an option pricing approach, they estimate the insurance premium around the October 1987 crash. A key difference between the Bates and Craine's analysis and ours is that they consider a hypothetical insurance on a single S&P 500 futures contract. Gemmill (1994) assesses the cost of default of a stylized CCP assumed to clear three generic futures contracts – soft commodity, metal, and financial – and to collect £50 million of margin from each market. He considers different levels of default cost and, as acknowledged by the author (on page 991), assigns "highly subjective" default probabilities. Under the assumed default scheduled, Gemmill estimates a rough estimate for the premium of an insurance covering against a default by the CCP. Contrary to previous research, we use *actual* data on CM's *portfolios* to price a realistic insurance policy covering the loss due to the default of one or several CMs.

We claim that there is a clear analogy between the premium of the default insurance and the fair cost of the guarantee provided by the central bank. Indeed, just like a private insurance company, the Federal Reserve (or the U.S. Federal Treasury) may have to compensate the CCP in the event of a default by one or several CMs in order to prevent a breakdown of the financial system. As Bernanke (1990) puts it "the Fed became the insurer of last resort" during past episodes of extreme volatility, such as October 1987. For the Federal Reserve, the deductible corresponds to any guarantee fund held by the CCP. As a result, our study permits to put a dollar amount on the service provided by the central bank, which is the *implicit* insurer of the clearing house. This is ultimately the cost to the tax payer of the implicit protection of the clearing house.

Although the focus of the current paper is on organized derivatives exchanges, our analytic tools can be applied to clearing companies on the over-the-counter (hereafter OTC) market. Indeed, a growing fraction of OTC products are cleared through one of the three

main clearing processes. First, some OTC products are converted into equivalent exchange-traded contracts and cleared on derivatives exchanges CCPs.¹¹ Second, SwapClear, a CCP for OTC interest rate swaps, clears approximately 40% of the global inter-dealer market for interest rate swaps (as of December 2006, Bank for International Settlements, 2007). SwapClear exhibits most of the features of a derivatives exchange’s CCP, e.g., CMs, regulatory capital and minimum credit rating for CMs, and parent firms. Third, OTC derivatives prime brokers operate very much like CCPs since they clear and settle the trades of a small number (around 30) of large buy-side investors, typically hedge funds. For each transaction, the prime broker interposes itself between the hedge fund and the other party. As a result, a prime broker is a de facto CCP which is exposed to the risk of default by a large end-user.

The outline of the paper is as follows. In the next section, we present our data and analyze the risk properties of the performance bonds and margin variations for house and customer accounts. We pay special attention to the (left) tail behavior of the variation margin - performance bond ratio. In Section 3, we describe the default insurance contract and implement our valuation strategy. We summarize and conclude our study in Section 4.

2 Risk Analysis

2.1 Data and Preliminary Results

Our empirical analysis is based on daily performance bond requirements (B) and daily variation margins (V) for all the CMs of the Chicago Mercantile Exchange’s CCP (see list in Table 1). The variation margins reflect daily aggregate mark-to-market gains or losses on CMs’ positions in futures and options on interest rates, equity, foreign exchange rates, and commodities (see Table 2). The sample period covers the period January 4th, 1999 - December 31st, 2001, which includes several prominent episodes such as the burst of the internet bubble and the terrorist attack of September 11th, 2001. For each of our 71 sample CMs, amounts are separated between house accounts, B_H and V_H , and customer accounts, B_C and V_C . This partition of the dataset between proprietary and customer trading reflects

¹¹For instance, Clearing 360, an exchange service offered by the Chicago Mercantile Exchange since April 2006, takes a bilaterally negotiated OTC swap trade and converts it into a strip of futures contracts, which are then submitted to Chicago Mercantile Exchange for clearing. Similar OTC clearing services are provided by Bclear (Euronext.Liffe), OTC Trade Entry Facility (Eurex), Converge (Canadian Derivatives Clearing Corporation), and Clearport (New York Mercantile Exchange).

the principle of strict segregation of customer funds in place in most CCPs. In our dataset, 60 CMs have both a house and a customer accounts, nine only have a house account, and two manage a customer account only. The total sample size is 43,236 member/day observations for house accounts and 41,013 member/day observations for customer accounts.

The performance bonds are computed at the end of each trading day by the SPAN margining system. This system, which was originally developed by the Chicago Mercantile Exchange, is currently used by more than 50 registered exchanges in the world (e.g. CME, CBOE, CBOT, NYMEX, COMEX, Euronext, and Eurex). SPAN provides a "risk array" analysis of possible scenarios for each position under various conditions. Each scenario consists of a "what if" situation in which SPAN assesses the effect of variations in price, volatility, and time to expiration. The key parameters that need to be set by the clearing organization are the volatility and price scan ranges. For instance, Scenario [1 of 16] computes the gain or loss on a position in a situation in which the price remains unchanged and the volatility increases by 3/3 of the volatility scan range; Scenario [4 of 16] is based on an increase in the price of 1/3 of the price scan range and a decrease in volatility of 3/3 of the volatility scan range; and Scenario [13 of 16] is based on a decrease in the price of 3/3 of the price scan range and an increase in volatility of 3/3 of the volatility scan range. For each position, the system selects the largest loss across all considered scenarios. Next, SPAN combines financial instruments within the same underlying asset for analysis. Finally, total margin requirement for a given portfolio is given by the sum of the risk of all underlying assets less all credit for risk offsets among underlying assets. SPAN lets each CCP determine the diversification effect between futures with different maturities or between futures written on different underlying assets (see CFTC, 2001 for more details).

We plot in Figure 1 the cumulative daily performance bond across all CMs averaged over each month. We see that both house account and customer account margins have experienced a positive trend until the third quarter of 2001. Another interesting feature of the data is the higher magnitude of the customer margins (i.e., cumulative B_C around 15 billion dollars per day) compared to house margins (i.e., cumulative B_H around 6 billion dollars per day). This difference between the magnitude of house and customer accounts is due in part to the gross margining regime under which customer accounts are administered. We display in Figure 2 the daily variation margins for house and customer accounts. We notice a clear change in the volatility of the variation margins between the first and second part of our sample period. Our preliminary analysis seems to indicate that the distributions of the performance bonds and variation margins are not stationary through time.

Since we are interested in potential default by a CM, we need to compare, on each day, the performance bond with the variation margin of each CM.¹² In particular, a situation where $B_H + V_H < 0$ is problematic since the CM may decide to default instead of paying the deficiency. In our analysis, we favor an alternative, however equivalent, expression that is the ratio of the variation margin and performance bond. In this case, default may occur if $V_H/B_H < -1$ or $V_C/B_C < -1$.¹³ We plot in Figure 3 the time series of the ratio of the variation margin and performance bond for each type of accounts. This variable indicates the fraction of the margin that is won or lost by a CM on a given day. Contrasting the V/B ratio for house and customer accounts turns to be very informative as this ratio is much more volatile for house accounts than it is for customer accounts. In our sample, there are 68 occurrences when the daily loss on the house account exceeds the posted margin whereas the corresponding number for customer accounts is four. The most severe event corresponds to a loss on proprietary trading that amounts to 173% of the posted margin. In dollar terms, the most severe daily loss (among these 68 occurrences) amounts to around 44 million dollars. Interestingly, underwater accounts do not only affect a handful of CMs exhibiting extreme risk appetite as almost one third of our sample CMs have experienced at least one margin-exceeding loss.

We complement our initial inspection of the data with some descriptive statistics in Table 3. For each type of account (house vs. customer), we consider four variables of interest, namely the performance bond, the variation margin, as well as the level and the absolute value of the V/B ratio. We see that the average house performance bond is just shy of the \$100 million mark and that the average customer performance bond is almost three times larger. Comparing average V across types of accounts reveals that proprietary trading is on average more profitable than trading by customers, which is consistent with previous studies comparing the performance of various investor types (Grinblatt and Keloharju, 2000, and Frazzini and Lamont, 2007).¹⁴ Although the average and median values of the V/B ratio are zero, the absolute value ratio is, on a typical day, around 15% for house accounts and 7% for customer accounts. In dollar terms, that amounts to 900 million

¹²More precisely, we contrast the performance bond set at the end of a given trading day, $B_{t\text{end}}$, with the variation margin computed over the following trading day, V_{t+1} . In the following, we will drop the time index for simplicity.

¹³A V/B ratio smaller than -1 is a necessary condition for defaulting but not a sufficient one. Reasons for not defaulting include the benefit of reduced clearing fee rate, reduced collateral cost (i.e., net margining system), membership value, present value of future rents, and reputation effect for parent companies.

¹⁴We cannot infer the CM's overall profit/loss from house accounts since much of the trading activity is arbitraging between the futures and over-the-counter markets or cash markets (e.g., cash-futures arbitrage of the S&P 500 index, eurodollar-interest rate swap arbitrage). Thus a negative V might be matched by positive mark-to-market gains elsewhere.

dollars ($= 0.150 \times 6$ billion) for house accounts and 1.1 billion dollars ($= 0.074 \times 15$ billion) for customer accounts. On a technical note, we notice that the B and V variables are much more skewed (especially B_H and B_C) and exhibit fatter tails (especially V_H and V_C) than the V/B ratios.

In the three lower panels of Table 3, we split the three-year sample period into three equal-sized subperiods. Consistent with our analysis of Figures 1 and 2, we find that the average margin account has been growing through time and that the distributions of the variation margins are pathologically non-stationary. Differently, the first four moments of the V/B ratio are remarkably stable across subperiods. Of particular interest is the very low correlation between the V/B ratio and the level of the performance bond, i.e., 0.003 for house accounts and less than 0.001 for customer accounts. Furthermore, this correlation coefficient has never exceeded 1.3% or gone below -1.3% on a given sample year using either house or customer data. This modest in-sample correlation points toward linear independence between the V/B ratio and the margin account size, which is a very important property if one wants to aggregate data across CMs.

In Table 4, we present similar descriptive statistics by account size quantile. Specifically, the first (respectively fourth) quantile considers the 25% smallest (respectively largest) daily performance bonds. Consistent with this partition rule, the average performance bond grows exponentially from Panel A (smallest accounts) to Panel D (largest accounts). We note that the distribution of the V/B variable remains stable across size quantiles and that the correlation between V/B and B is always close to zero.

In the following sections, we are going to focus our analysis on the V/B ratio rather than on their sum, or on any of their component in isolation. We follow this strategy for the following reasons. First, the V/B ratio allows us to efficiently combine the information about variation margins and performance bonds (no loss of information) in a compact way. Second, the distribution of V/B is much more stable through time and across size quantiles than the distribution of B or V . Third, the very low correlation between V/B and B allows us to aggregate information across CMs without dramatically skewing the data because of account size differences.

The final step of our exploratory analysis of the data is constructing an histogram of the V/B variable. Consistent with our previous results, we note in Table 5 the higher variability of the V/B ratio for proprietary trading than for trading from customers. For instance, 76.2% (respectively 48.62%) of the time V_C/B_C (respectively V_H/B_H) remains within the

]-0.1;0.1] range. Another key statistical difference between house and customer accounts is the thickness of the tails of the distribution of V/B . In our house accounts sample, 1 out of 185 observations lies in the extreme left tail (defined as relative losses exceeding 70% of the performance bond, i.e., $V/B < -0.7$) whereas the corresponding frequency is only 1 out of 1,250 observations for customer accounts. With 60 CMs, this implies one extreme (but not rare) event affecting a house account every three days ($\simeq 185/60$). We also notice that, on average, observations in the tails of the distribution tend to be associated with smaller performance bond. However, as suggested by the maximum values, some sizable accounts also end up far in the tails of the distributions. We specifically analyze the extreme left tail of the distribution in Figure 4. We clearly see that V/B is much more negatively skewed for house accounts than it is for customer accounts. This result further supports the idea that the main source of default risk is proprietary trading and not trading by customers.

2.2 Tail Behavior

Modelling defaults in a derivatives exchange calls for a characterization of the far end of the left tail of the V/B distribution. To do so, we deviate from the standard approach in statistics that is to fit the entire distribution with a given distribution. The intuition is that data in the bulk or in the right tail of the distribution do not help much, and sometimes hurt, in characterizing the left tail of the distribution. Instead, we follow an extreme value approach in which only observations with losses exceeding a pre-specified threshold θ are used.¹⁵

The result we use is a theorem by Balkema and de Haan (1974) and Pickands (1975) that states that under moderately general conditions the distribution of the excess $z = X - \theta$ of a random variable X over a high threshold θ , conditional on the threshold being exceeded, converges to the generalized Pareto distribution G . This distribution depends on two parameters: a scale parameter σ and a tail shape parameter k , which both can be estimated by maximum likelihood (see Appendix for details). Its cumulative distribution function is:

$$G(z; \sigma, k) = \begin{cases} 1 - (1 - kz/\sigma)^{1/k} & k \neq 0 \\ 1 - e^{-z/\sigma} & k = 0 \end{cases} . \quad (1)$$

¹⁵Over the past decade, Extreme Value Theory has become increasingly popular to model extreme events in finance, e.g. Longin (1996, 2000, 2005), Embrechts, Kluppelberg, and Mikosch (1997), Diebold et al. (1998), McNeil and Frey (2000), Neftci (2000), Longin and Solnik (2001), Bae, Karolyi and Stulz (2003), Poon, Rockinger, and Tawn (2004), and McNeil, Frey, and Embrechts (2005).

For $k > 0$, the above applies for $0 \leq z < \sigma/k$, with $G = 1$ for $z \geq \sigma/k$ and $G = 0$ for $z < 0$ (i.e., the range of z is bounded). The case $k = 0$ will occur if sampling is from normal, lognormal and several other common distributions. The case $k < 0$ occurs if sampling from fatter tailed distributions. Differentiating G with respect to z gives the probability density function:

$$g(z; \sigma, k) = \frac{1}{\sigma} (1 - kz/\sigma)^{-1+1/k} \quad (2)$$

in the relevant domain. Note that in what follows, exceedance is interpreted as amount by which V/B falls below θ .

The choice of the threshold θ is a crucial step in characterizing the tail of the distribution. In general it should be set large enough that the data exceeding it is clearly in the relevant tail of the distribution, but small enough that the remaining sample is adequate for estimating the remaining parameters. In our test, we perform estimation for a range of θ 's from -0.7 to -0.9 . This corresponds to daily losses ranging from 70 to 90% of the posted margin. Furthermore, estimation of the tail distribution parameters is done separately for house and customer accounts. We report in Table 6 the maximum likelihood estimation results. For each threshold level, we display the number of observations in the tail n , the estimated parameters k and σ , along with their asymptotic standard errors. We see that out of the 43,236 member/day observations for house accounts, 233 observations lie in the left tail of the distribution when the threshold is set to -0.7 . Moreover, the number of exceedances mechanically decreases as the threshold becomes further negative, e.g. $n = 142$ when $\theta = -0.8$. Depending on the considered threshold, the tail shape parameter estimate ranges from 0.0107 to 0.2492 and the scale parameter ranges from 0.1321 to 0.3059. We also notice that, as expected, standard errors decrease with increasing sample size. When customer account data are used, the number of exceedances is much smaller than with house account data. In particular, when $\theta = -0.9$, the number of exceedances is as low as eight. This latest result confirms our analysis in Section 2.1 in which we document that extreme losses affect primarily house accounts. The results from this section are going to play an important role in the valuation of the default insurance, which we next explore.

3 Default Insurance

3.1 Contract Features and Valuation Strategy

We now turn to the development of an insurance contract that protects the CCP against the default of one or several of its CMs. We assume that CM default occurs according to the following stochastic process. Default requires that (a) futures prices have changed sufficiently since the previous day that loss in margin account exceeds performance bond posted, and (b) member elects to default rather than pay the deficiency. Over the fixed term of T years, there is a policy deductible, or first loss amount born by the insured, D , and overall payout limit L . Premium is paid in advance for each payment interval, which have length t_p years, at an annual rate of p per dollar of policy limit, i.e., payment on each such date is $p \cdot t_p \cdot L$.¹⁶ Another realistic feature of our contract is that accumulated default losses for purpose of the deductible is reset to zero at the end of each reset interval of length t_r .

In our model we make the following two assumptions. First, default by a CM can only be due to a deficiency in the house account. Second, account value change as a proportion of previous day performance bond is independent of the size of the performance bond. Both assumptions are consistent with the risk analysis presented in Section 2. Indeed, we have shown that deficiencies in house accounts are much more frequent than deficiencies in customer accounts. Furthermore, the independence assumption is motivated by the fact that empirical correlations between V/B and B are close to zero.

The main building blocks of our model are as follows. Value changes of policy-relevant magnitude are in the negative tail of the distribution of proportional value changes of any given firm. As in Section 2, the tail is defined by proportional value loss exceeding a threshold θ . Value changes of policy-relevant magnitude are caused by the arrival of trigger events, which arrive as a Poisson process with constant arrival intensity λ . Upon arrival of a trigger event, proportional value loss for a given firm exceeds θ with a fixed probability π . In our model, exceedance of the threshold may be correlated across firms and a single exceedance correlation parameter ρ_θ characterizes the common pairwise correlation. Conditional upon a trigger event and exceedances occurring, the size of exceedance z for a given firm is a random draw from a generalized Pareto distribution with scale parameter σ and tail shape parameter k . We allow the size of exceedances to be correlated across firms

¹⁶It is conventional in the insurance industry to report the insurance premium in basis points per year on policy maximum payout.

and we use a single exceedance size correlation parameter ρ_z to characterize the common pairwise correlation. Firms with value loss exceeding performance bond, $z + \theta < -1$, are candidates for default. Default occurs independently across firms with probability π_1 for $-2 \leq z + \theta < -1$ and with probability π_2 for $z + \theta < -2$.

The nine parameters of the default process are thus $\lambda, \pi, \theta, k, \sigma, \rho_\theta, \rho_z, \pi_1, \pi_2$. Of these, θ and π are technical parameters and statistician imposed in the tail analysis. Given these, λ, k, σ are estimated by maximum likelihood methods from historical data. The remaining parameters $\rho_\theta, \rho_z, \pi_1, \pi_2$ are analyst imposed.¹⁷ Note that since no defaults have occurred over our sample period, any empirical estimate of π_1, π_2 would of course be zero.

Fair actuarial pricing for the contract is the p satisfying:

$$p \cdot A(T, t_p, r) \cdot L = E(\text{NPV of Policy Payouts}) \quad (3)$$

where $A(T, t_p, r)$ is the present value of a \$1/year annuity for T years (readily calculated analytically), paid in advance at intervals t_p , in a constant interest rate r environment. L is the policy limit on which the premium is paid and p is the annual premium rate. The right hand side of the equation is estimated as the average net present value (NPV) of policy payouts over Monte Carlo simulations of the default process modelled above.¹⁸

For given λ, k, σ values, each path is simulated as follows. An exponentially distributed random time dt to next Poisson trigger event is drawn. This is done by drawing a uniform $[0, 1]$ random variable u , then setting $\Delta t = -\ln u/\lambda$. If time since start crosses a deductible reset date, cumulative loss is reset to zero. Standard normal random variables x_0, y_0 are drawn for the common factors influencing whether individual firms exceed the value loss thresholds and the amount by which they exceed. Looping through each of the M firms, an independent standard normal x_i is drawn and the correlated standard normal $x = \rho_\theta^{1/2}x_0 + (1 - \rho_\theta)^{1/2}x_i$ formed. If $x < F^{-1}(\pi)$, where F^{-1} is the inverse normal cumulative distribution function, then firm i is determined to have exceeded loss threshold θ . This implies that exceedance occurs with probability π . If firm i exceeds the loss threshold, another independent standard normal y_i is drawn and the correlated standard normal

¹⁷In Section 3.5, we investigate the effect on the insurance premium of changing the value of the key parameters.

¹⁸In Equation (3), future cash-flows are discounted using the risk-free rate since it is very difficult to make a case for having a positive or negative beta for this insurance contract. The reasons are that CME derivatives payoffs depend on the value of a variety of underlying assets (interest rates, stock indices, foreign exchange rates, and commodities), that there are, by design, as many long as short positions, and that liquidity crises are not necessarily associated with contemporaneous negative stock market returns.

$y = \rho_z^{1/2} y_0 + (1 - \rho_z)^{1/2} y_i$ formed. An exceedance size is computed as $z = G^{-1}(F(y))$, where F is the cumulative normal distribution function and G^{-1} is the inverse of the generalized Pareto cumulative distribution function. Note that $F(y)$ will be a (correlated) uniform random variable, and thus z will be a correlated random variable following a generalized Pareto distribution. If the proportional loss exceeds the performance bond, $\theta + z < -1$, the firm is a candidate for default. Default or not is determined by a further independent uniform random draw, with default probability either π_1 or π_2 depending on the magnitude of $\theta + z$.

If default by firm i occurs, the default cost is set by drawing a performance bond level from the empirical distribution of B_H . The range of performance bond levels is partitioned into buckets from 0 to maximum observed level. The number of daily observations of firms in each bucket is counted over the year. This determines an empirical distribution function $F(S) = Pr\{s \leq S\}$ of firm sizes, assumed to be linear between bucket levels. The number of clearing members is assumed constant at $M = 60$, which is the average number of clearing members. Firm sizes for simulation are then the M sizes given by $s_i = Q^{-1}(i/M)$, where Q is the size distribution and $i = 1, \dots, M$. In the event of a default by CM i , payment by the insurance company is set at the minimum of the default amount, the remaining aggregate policy limit, and the amount by which cumulative defaults to date exceed the deductible. Any payment is discounted back to the present at the risk-free rate and added to cumulative present value of payouts.

3.2 Valuation Results

We consider the following base case for the insurance policy: a three-year policy, with a \$500 million deductible, a \$500 million payout limit, a deductible reset interval of 0.25 years, and a premium payment interval of 0.25 years. The values of the other parameters are $\rho_\theta = \rho_z = 0.5$, $\pi_1 = 0.2$, $\pi_2 = 0.5$, and $r = 5\%$.¹⁹ Assuming 250 trading days per year, annualized arrival rate of threshold exceedances per firm is estimated as $a = n/(250 \times 60 \times 3)$, where n is the number of exceedances of θ in the sample. Estimated arrival rate of trigger events is then $\lambda = a/\pi$ with $\pi = 0.25$. Furthermore, we take the size distribution as fixed at the average distribution over the most recent sample year (2001).

We report in Table 7 the estimated insurance premium for several threshold levels. Our

¹⁹The relatively small values for π_1 and π_2 reflect the apparent strong economic incentive of CM for not defaulting.

main finding is that the premium is around two basis points per year on policy maximum payout, with standard errors approximately one-fifth of the point estimate. Given the \$500 million payout limit assumed in our base case (see Panel A), a two basis point premium rate results in \$100,000 premium payments per year. Since the term of the policy is three years, the total insurance premium is around \$300,000. We also report the probability of any payout event over term of policy (p_{pay}), the probability of policy limit payout over term of policy (p_{max}), and the probability of at least one firm defaults during policy term (p_{def}). The marginal effects of having a policy payout limit and/or a deductible are investigated in Panels B-D of Table 7. As expected, these two features have dramatic effects on the insurance premium and on the probabilities of any payout or maximum payout. For instance, with a threshold equals to -0.8, waving the deductible increases the probability of any payout by a ratio of 19 and the insurance premium (or value) by a ratio of six. Furthermore, relaxing jointly the cap on the payout and setting the deductible to zero pushes the value of the insurance to around \$2 million.

To further illustrate our simulation-based pricing strategy, we display in Figure 5 the value and the frequency of the simulated total default losses obtained from 40,000 simulated paths. In this experiment, we use our base case with a threshold of -0.8. There are 768 paths ($p_{\text{def}} = 1.92\%$) experiencing at least one default and, as a result, 39,232 paths ($1 - p_{\text{def}} = 98.08\%$) experiencing no default. Although some of the total losses are sizable – the maximum value is \$2.08 billion – the majority of the losses remains below the \$25 million mark.²⁰ Moreover, we find that 2% of the total default losses exceed \$1 billion.

We investigate in Table 8 whether our pricing results are critically sensitive to the value of certain key parameters. In this comparative statics exercise, we recompute the value of the default premium, along with the associated probabilities (p_{pay} , p_{max} , and p_{def}), while changing the value of one parameter at the time. The value of the other parameters remains equal to their base-case value and the threshold we use is -0.8. We consider designated changes in parameters of plus or minus 50% of the base-case value (e.g. from $\rho_{\theta} = 0.5$ to $\rho_{\theta} = 0.75$ and 0.25). We also consider an extreme case in which we set all correlation parameters (ρ_{θ} and ρ_z) to zero. While the estimation results remain rather stable on the whole, several findings are worthwhile being stressed. First, π_1 is highly influential, as one might expect. Second, changing the value of π_2 has no effect whatsoever on the results. The reason is that no V/B values smaller than -2 occurred in the simulations with this

²⁰The discrepancy between DefMax in Panel A of Table 7 and the maximum value in Figure 5 is due to the fact that DefMax measures individual defaults whereas Figure 5 displays *total* or *cumulative* defaults over the entire path.

particular set of parameters. Indeed, as shown in Section 2.2, the most negative value for V/B is -1.9543 (i.e., the upper bound is $1.9543 = 0.2695 / 0.1379$).

3.3 Value of the Federal Reserve Guarantee

The insurance contracts developed in this section allows us to put a dollar amount on the service provided by the central bank. Indeed, the Federal Reserve (or the U.S. Federal Treasury) may ultimately have to act as the *implicit* insurer of the clearing house in case of a major financial meltdown (Bernanke, 1990). The cost of this service is given by the fair value of a default insurance with no payout limit and a "deductible" equal to the total security deposit held by the CCP. In order to estimate the size of this deductible one needs to understand the default procedure in place at the Chicago Mercantile Exchange. In the event of a payment default that originates from a house account, the CCP takes the following actions (in this order): (1) transfer all customer positions to another CM; (2) take control or liquidate the positions in the defaulting house accounts; (3) apply the CM's security deposit and house performance bonds to the failed obligation – recall customer performance bonds may not be used by the CCP; (4) attach all other assets of the CM that are available to the CCP, such as membership and pledged shares; (5) invoke any applicable parent guarantee; (6) use lines of credit as a temporary liquidity facility; (7) apply the surplus fund and aggregate security deposit of the clearing membership; and (8) assess non-defaulting CMs for any unsatisfied obligations up to a pre-specified cap, expressed as a multiple of the aggregate security deposit.

As of December 31st, 2001 (i.e., end of our sample period), the available financial resources in the case of a default are \$821 million (from (1) to (7)) with an additional \$2,358 million in capital assessment powers (8).²¹ Although the former amount is readily available to the CCP, the latter is more of a theoretical bound since there is no deposit yet. In particular, it is not completely clear which fraction could eventually be obtained in a timely manner. Furthermore, since the allocation would be based on each CM's share of the security deposit pool, the size of the assessment would be greatly reduced should the defaulting firms be the largest CMs. Finally, some CMs may decide to default on this extra capital assessment. For these reasons, we use in the following a deductible of \$821 million.

²¹The \$821 million figure is obtained by adding \$3 million (market value of pledged shares and membership), \$113 million (surplus funds), and \$705 million (security deposits of clearing firms). Note also that the CCP has a \$500 million line of credit but this amount is not included by the CME in the definition of the total financial safeguard package (Source: Chicago Mercantile Exchange 10K form for fiscal year 2001).

We present the estimation results in Table 9. The value of the commercial equivalent of the Federal Reserve guarantee is between \$200,000 and \$380,000 for a three-year policy. The magnitude of the insurance premia is consistent with our results in Table 7 but are rather small, especially when compared to actual historical losses faced by the Federal Reserve. For instance, the ultimate cost of the U.S. Savings and Loan crisis of the 1980s and 1990s is estimated to have totaled around \$160 billion, among which about \$124 billion were directly paid by the U.S. government. However, the figures reported in Table 9 correspond to expected costs, not actual ones. Although the theoretical cost of this guarantee is modest, the value for the society is huge. Indeed, reducing the chance of a collapse of the financial system is priceless. The various economics and financial disruptions triggered by a CCP failure would have a huge social cost.

A few additional remarks need to be done. First, our estimates are based on pre-merger data from 1999-2001. As a result, current figures would certainly need to be scaled up. Second, our sample does not include the most critical episode in the history of derivatives clearing, namely October 1987. We study the impact on our key results of including the Black Monday in Section 3.4. Third, our estimates do not account for defaults on customer accounts – an issue further discussed in Section 3.6.

3.4 Black Monday Effect

On October 19th, 1987, the Chicago Mercantile Exchange's S&P 500 futures contract dropped 80.75 points to 201.50. Rumors about possible clearinghouse failures spread out quickly on Black Monday which added to the sense of panic in the markets (Bernanke, 1990 and Bates and Crane, 1999). The surge in volatility was even more pronounced on the futures market than on the equity market (Schwert, 1990). Furthermore, as volatility in the futures markets increased, the Chicago Mercantile Exchange's CCP significantly increased margin requirements (Wall Street Journal, 1987) and made extensive use of intra-day margin calls. The Federal Reserve helped provide liquidity for the loans to the CMs and the credit extended to brokers and dealers by banks jumped notably after the crash (Carlson, 2007). Thanks to the Fed decisive intervention, margin accounts for Chicago Mercantile Exchange CMs were fully funded by market opening. However, morning settlement on October 20th was not completed on time for the Options Clearing Corporation, which cleared transactions for the Chicago Board of Options Exchange (Brady Report, 1988).²²

²²First Options of Chicago, Inc., the nation's largest options clearing firm took a \$90 million write-off for customer trading losses and was required to meet margin calls of its own. The Federal Reserve acted

In this section, we complement our original dataset with performance bonds and variation margins for all Chicago Mercantile Exchange CMs' house accounts on October 19th, 1987. This expanded sample allows us to quantify the impact of a major crisis on the fair value of a default insurance contract. From a regulator's point of view, information about an actual crisis situation can be of great interest. The main concern to add one extreme day from 1987 to our sample is the fact that margins in the eighties were much smaller than in recent years. However, since the variable of interest is the V/B ratio, the size difference does not alter the analysis. Furthermore, as expected on a market crash, the number of underwater accounts is extremely high. We find that 15 CMs experienced a loss exceeding their posted margin on this particular day. However, as many of them concerned very small accounts, we eliminate from consideration member accounts with performance bonds less than \$10 million. This conservative approach allows us to not unduly exaggerate the role of the crash in the analysis. Indeed, the historical frequency of a major market crash is less than once every three years, i.e., our sample size. We end up with five V/B ratios smaller than -0.7 (our largest threshold), namely -4.646, -4.482, -4.430, -4.052, -0.979. We note that these values are extremely high, without any comparison with the values observed in our original (no-crash) sample.

Armed with this expanded dataset, we re-conduct our tail analysis and present the results in the Panel A of Table 10. A direct effect of adding five outliers is to make the tail shape parameter more negative, which is consistent with a much fatter left tail for the distribution of V/B . The parameter estimate is also more stable across thresholds as it remains between -0.315 and -0.340. We note that the estimated value of the scale parameter is significantly less affected by the inclusion of the market crash. Of particular interest is the impact of the extra data on the value of the insurance contract. We report the estimated insurance premium for our base case in Panel B of Table 10. Although the probability of having an extreme event remains virtually unchanged, the losses are much more severe. This is reflected in the probability of having payout event over policy term, the probability of policy limit payout over policy term, and in turn, by the insurance premium whose value is multiplied by more than three compared to Table 7 (Panel A). Note that the maximum default size appears to be a major contributor to the premium difference with the 1987 data. Indeed, the simulated default loss can be as high as \$13.6 billion.

Finally, we recompute the value of the Federal Reserve guarantee in Panel C of Table 10.

to enable Continental Illinois, the parent company of First Options, to pour hundreds of millions of dollars into the firm to keep it afloat. Without this emergency infusion of capital, First Options would likely have defaulted (Carlson, 2007).

In line with the first two panels, our estimates differ drastically from our previous analysis. As for the Federal Reserve guarantee, the estimated fair value is multiplied on average by 10, with a value around \$3 million. Thus, including information about actual financial crises turns out to be particularly important in assessing the fair cost of the protection provided by the Federal Reserve. This result is of primary importance since it is only in such extreme market conditions that the central bank eventually becomes insurer of last resort (Bernanke, 1990).

3.5 Moral Hazard Concerns

Would the default insurance proposed in this paper foster significant moral hazard? A potential moral hazard manifestation would be that, once insured, either the CCP would become less vigilant in adjusting parameters of the SPAN system to reflect new volatility developments, or CMs would pressure the CCP to reduce performance bond requirements (since the members would now be less liable for defaults by their colleagues). Since the members "own" the CCP, and can hire and fire its management, such pressure would be difficult to resist. We believe that it should not be too much of a problem in practice because the presence of a sizable deductible would force the CCP to exhaust all its security funds before any payment would be made. Furthermore, the recent default insurance contracts sold by insurance companies to several derivatives exchanges (see examples on page 2) suggest that moral hazard is not a deal-breaker in practice.

One way for the insurer to further mitigate the moral hazard problem would be to undertake close monitoring to ensure that margin requirements accurately reflect current market conditions. However, such a monitoring would be extremely costly for the insurer and hard to enforce in practice. Alternatively, the default insurance could be made contingent upon several conditions being met in the event of claim. Such conditions could be that the proportion of account-days in the most recent month for which the V/B ratio is less than -1 is less than 0.25% and that the proportion of account-days in the most recent month for which the V/B ratio is less than -0.7 is less than 0.5%. Similar conditions based on a longer-term backtest period (say 6 months) could also be imposed. The one-month rolling window backtest would be intended to ensure and encourage prompt response by the CCP to changed volatility in particular markets. The longer rolling window backtest would be intended to give a larger sample with which to verify the appropriateness of their performance bond determination policies.

3.6 Default on a Customer Account

In this section, we discuss several potential extensions of the current analysis. So far, the only considered source of CM default is proprietary trading. However, it is plausible that the default originates from a customer position. As already mentioned, this event is far less likely to occur for two reasons. First, customer accounts are administered under gross margining and second, the CM's house performance bonds are pledged to cover any deficiency on the customer account. Technically speaking, the second reason implies that one would have to switch from V_C/B_C to $V_C/(B_C + B_H)$ in case of payment default on a customer account. This prevents us from using our model with customer account data.

Although CCPs segregate customer performance bonds from house performance bonds, customer performance bonds for each CM are pooled together. If a default occurred in the CM's customer account, the CCP applies toward the default all customer performance bond deposits and positions in the defaulting CM's customer origin account. Accordingly, positions and performance bonds deposited by customers not causing the default are potentially at risk, i.e., they can be liquidated (Jordan and Morgan, 1990). A potential adverse effect of this is that investors may be reluctant to channel their trades through a CM that has large, risk-seeker customers. This could be particularly acute in absence of proprietary trading since, in that case, no house performance bond is pledged. In order to reduce the perverse effect of information asymmetry, such a CM could purchase a default insurance like the one developed in this paper to protect its non-defaulting customers, and in turn, increase its market share.

4 Conclusion

A clearing house failure is a major systemic risk event. In this paper, we take an inside look at a central counterparty clearing house, with a special emphasis on its exposure to default risk. Using actual daily data on margin requirements and variation margins for all the clearing members of the Chicago Mercantile Exchange's clearing house, we shed some light on the potential sources of default risk within the clearing house. In particular, we identify many occurrences when a member's daily loss exceeds his posted margin. We document that underwater accounts are much more frequent for house accounts than it is for customer accounts, which suggests that the major source of default risk is proprietary trading. Furthermore, we quantify the default risk by characterizing the left tail of the distribution of the ratio between variation margin and performance bond.

In this paper, we also develop, and price, a realistic insurance contract covering the loss to the clearing house from default by one or several clearing members. This financial innovation allows a substitution of the implicit insurer of the clearing house, i.e., the central bank, by an explicit insurer, i.e., one or several insurance companies. The estimate of the insurance premium can also be interpreted as the fair cost of the service provided by the central bank as an implicit insurer of the clearing house.

The insurance policy designed in this paper could be employed in different contexts. Indeed, it could be used to compute the fair premium of an insurance policy covering the loss to a brokerage firm from default by one or several customers, especially if the firm is also a CM. A first beneficial effect of such a contract would be to protect the performance bond of the firm. A second benefit would be to protect the performance bond of non-defaulting customers in the case of a default by another customer of this CM. Finally, although our insurance contract has been developed for derivatives exchanges, it could be calibrated in a similar way to OTC de-facto clearing institutions, such as prime brokers.

Appendix: Estimation of Tail Distribution Parameters

Suppose we have a large set of N independent observations of a random variable X . Choose a tail estimation threshold θ large enough so that the observations exceeding θ are credibly in the upper tail, but not so large that the number of observations is insufficient to confidently identify k and σ . Let n be the number of observations exceeding θ . There is a tradeoff here between bias, from not being sufficiently far in the tail for the asymptotic distribution result to hold, and variance, from having too few observations to estimate k and σ .

Let X_i , $i = 1, \dots, n$, denote the observations above the θ selected, and $z_i = X_i - \theta$ the corresponding exceedances. Using the i.i.d. assumption, the log of the likelihood function for this data is the sum of the log density functions from Equation (2):

$$\mathcal{L} = -n \ln \sigma - \left(1 - \frac{1}{k}\right) \sum_{i=1}^n \ln(1 - kz_i/\sigma). \quad (\text{A1})$$

Maximum likelihood estimates are the values of k and σ that maximize this expression. First order conditions for a maximum of \mathcal{L} with respect to k and σ are:

$$\mathcal{L}_\sigma = 0 = -n/\sigma - \left(1 - \frac{1}{k}\right) \sum_i \frac{kz_i/\sigma^2}{1 - kz_i/\sigma} \quad (\text{A2})$$

$$\mathcal{L}_k = 0 = -\frac{1}{k^2} \sum_i \ln(1 - kz_i/v) + \left(1 - \frac{1}{k}\right) \sum_i \frac{z_i/\sigma}{1 - kz_i/\sigma}. \quad (\text{A3})$$

We define a new variable $c \equiv k/\sigma$ and substitute into Equation (A2). The pair of equations can be partially solved to:

$$k = -\frac{1}{n} \sum_i \ln(1 - cz_i) \quad (\text{A4})$$

$$0 = n + \left(1 + \frac{n}{\sum_i \ln(1 - cz_i)}\right) \sum_i \frac{cz_i}{1 - cz_i}. \quad (\text{A5})$$

Note that the last equation contains only the single unknown c . Although not analytically solvable, it is readily numerically solvable for \hat{c} (e.g., by Newton's method or the secant method). Then k can be computed from Equation (A4), and $\hat{\sigma} = \hat{k}/\hat{c}$.

References

- [1] Bae, K. H., G. A. Karolyi, and R. Stulz (2003), A New Approach to Measuring Financial Market Contagion, *Review of Financial Studies*, 16, 717-764.
- [2] Bailey, W. and E. Ng (1991), Default Premiums in Commodity Markets: Theory and Evidence, *Journal of Finance*, 46, 1071-1093.
- [3] Bank for International Settlements (2007), New Developments in Clearing and Settlement Arrangements for OTC Derivatives, Committee on Payments and Settlements Systems, Bank for International Settlements.
- [4] Bates, D. and R. Craine (1999), Valuing the Futures Market Clearinghouse's Default Exposure during the 1987 Crash, *Journal of Money, Credit, and Banking*, 31, 348-372.
- [5] Bernanke, B. (1990), Clearing and Settlement during the Crash, *Review of Financial Studies*, 3, 133-151.
- [6] Booth, G. G., J. P. Broussard, T. Martikainen, and V. Puttonen (1997), Prudent Margin Levels in the Finnish Stock Index Futures Market, *Management Science*, 43, 1177-1188.
- [7] Brady, N. F. (1988), Presidential Task Force on Market Mechanism, Report of the Presidential Task Force on Market Mechanisms, U.S. Government Printing Office.
- [8] Brennan, M. J. (1986), A Theory of Price Limits in Futures Markets, *Journal of Financial Economics*, 16, 213-233.
- [9] Carlson, M. (2007), A Brief History of the 1987 Stock Market Crash with a Discussion of the Federal Reserve Response, Working Paper, Board of Governors of the Federal Reserve.
- [10] Commodity Futures Trading Commission (1998), Review of the Financial and Sales Practice Compliance Program of the Chicago Mercantile Exchange, Report of the Division of Trading and Markets.
- [11] Commodity Futures Trading Commission (2001), Review of Standard Portfolio Analysis of Risk ("SPAN") Margin System, Report of the Division of Trading and Markets.
- [12] Cotter, J. (2001), Margin Exceedences for European Stock Index Futures using Extreme Value Theory, *Journal of Banking and Finance*, 25, 475-502.
- [13] Cotter, J. and K. Dowd (2006), Extreme Spectral Risk Measures: An Application to Futures Clearinghouse Margin Requirements, *Journal of Banking and Finance*, 30, 3469-3485.
- [14] Day, T. E. and C. M. Lewis (2004), Margin Adequacy and Standards: An Analysis of the Crude Oil Futures Market, *Journal of Business*, 77, 101-135.
- [15] Embrechts, P., C. Kluppelberg, and T. Mikosch (1997), *Modelling Extremal Events for Insurance and Finance*, Springer-Verlag, Berlin.

- [16] Fenn, G. W. and P. Kupiec (1993), Prudential Margin Policy in a Futures-Style Settlement System, *Journal of Futures Markets*, 13, 389-408.
- [17] Figlewski, S. (1984), Margins and Market Integrity: Margin Setting for Stock Index Futures and Options, *Journal of Futures Markets*, 4, 385-414.
- [18] Frazzini, A. and O. Lamont (2007), Dumb Money: Mutual Fund Flows and the Cross-Section of Stock Returns, *Journal of Financial Economics*, forthcoming.
- [19] Gay, G. D., W. C. Hunter, and R. W. Kolb (1986), A Comparative Analysis of Futures Contract Margins, *Journal of Futures Markets*, 6, 307-324.
- [20] Gemmill, G. (1994), Margins and the Safety of Clearing Houses, *Journal of Banking and Finance*, 18, 979-996.
- [21] Gibson, R. and C. Murawski (2007), The Price of Protection: Derivatives, Default Risk, and Margining, Working Paper, University of Zurich.
- [22] Grinblatt, M. and M. Keloharju (2000), The Investment Behavior and Performance of Various Investor-Types: A Study of Finland's Unique Data Set, *Journal of Financial Economics*, 55, 43-67.
- [23] Hills, B., D. Rule, S. Parkinson, and C. Young (1999), Central Counterparty Clearing Houses and Financial Stability, *Bank of England Financial Stability Review*, June, 122-133.
- [24] Jordan, J. V. and G. E. Morgan (1990), Default Risk in Futures Markets: The Customer-Broker Relationship, *Journal of Finance*, 45, 909-933.
- [25] Knott, R. and A. Mills (2002), Modelling Risk in Central Counterparty Clearing Houses: A Review, *Bank of England Financial Stability Review*, December, 162-174.
- [26] Knott, R. and M. Polenghi (2006), Assessing Central Counterparty Margin Coverage on Futures Contracts using GARCH Models, Working Paper, Bank of England.
- [27] Kroszner, R. S. (2007), Central Counterparty Clearing: History, Innovation, and Regulation, in *The Role of Central Counterparties*, ECB-FRBC Conference on the Role of Central Counterparties, European Central Bank, Frankfurt, Germany.
- [28] Kupiec, P. (1994), The Performance of S&P 500 Futures Product Margins under the SPAN Margining System, *Journal of Futures Markets*, 14, 789-811.
- [29] Kupiec, P. and P. White (1996), Regulatory Competition and the Efficiency of Alternative Derivative Product Margining Systems, *Journal of Futures Markets*, 16, 943-968.
- [30] Longin, F. (1996), The Asymptotic Distribution of Extreme Stock Market Returns, *Journal of Business*, 63, 383-408.
- [31] Longin, F. (2000), From Value at Risk to Stress Testing: The Extreme Value Approach, *Journal of Banking and Finance*, 24, 1097-1130.

- [32] Longin, F. (2005), The Choice of the Distribution of Asset Returns: How Extreme Value Theory Can Help?, *Journal of Banking and Finance*, 29, 1017-1035.
- [33] Longin, F. and B. Solnik (2001), Extreme Correlation of International Equity Markets, *Journal of Finance*, 56, 649-676.
- [34] McNeil, A. J. and R. Frey (2000), Estimation of Tail Related Risk Measures for Heteroscedastic Financial Time Series: An Extreme Value Approach, *Journal of Empirical Finance*, 7, 271-300.
- [35] McNeil, A. J., R. Frey, and P. Embrechts (2005), *Quantitative Risk Management: Concepts, Techniques and Tools*, Princeton University Press, Princeton, NJ.
- [36] Poon, S. H., M. Rockinger, and J. Tawn (2004), Extreme Values Dependency in International Stock Markets: Diagnostics, Models, and Financial Implications, *Review of Financial Studies*, 17, 581-610.
- [37] Schwert, William G. (1990), Stock Volatility and the Crash of '87, *Review of Financial Studies*, 3, 77-102.
- [38] Wall Street Journal (1987), Chicago Merc Margins Rise for S&P Futures Pacts, Oct. 19th, 47.

Table 1: CME Clearing Members

Clearing Member	Adj. Net Capital	Clearing Member	Adj. Net Capital
Morgan Stanley & Co Inc	5,409,748,261	AIG Clearing Corp	120,066,545
Goldman Sachs & Co	3,733,473,361	Fimat USA Inc	119,574,157
Credit Suisse First Boston Corp	2,832,527,999	Cantor Fitzgerald & Co	81,271,036
Merrill Lynch Pierce Fennert Smith	2,784,309,926	ADM Investor Services Inc	69,567,173
Bear Stearns Securities Corp	2,353,613,194	Banc of America Futures Inc	61,818,090
Lehman Brothers Inc	1,834,769,000	Pax Clearing Corp	43,989,639
UBS Painewebber Inc	1,459,061,416	BNP Paribas Brokerage Services	35,770,201
Morgan Stanley DW Inc	1,444,093,290	Rosenthal Collins Group LLC	34,231,128
Greenwich Capital Markets Inc	809,999,000	RJ Obrien Associates Inc	24,098,511
Prudential Securities Inc	790,787,000	FC Stone LLC	18,130,078
Nomura Securities International Inc	636,025,681	Tokyo-Mitsubishi Futures USA	17,623,751
JP Morgan Futures Inc	451,977,252	Tradelink LLC	14,502,364
Robertson Stephens Inc	420,118,043	UFJ Futures LLC	13,118,498
BNP Paribas Securities Corp	365,564,469	Credit Lyonnais Rouse USA Ltd	12,055,825
Barclays Capital Inc	306,560,645	Rand Financial Services Inc	11,759,353
Timber Hill LLC	292,528,947	Commerz Futures LLC	8,819,915
First Union Securities Inc	274,043,474	Transmarket Group LLC	7,752,405
Daiwa Securities America Inc	246,102,014	Fortis Clearing Chicago LLC	6,728,905
HSBC Securities USA Inc	207,789,144	SMW Trading Company Inc	6,508,638
Carr Futures Inc	207,596,554	Shatkin Arbor Karlov & Co	6,034,713
First Options of Chicago Inc	187,115,073	Kottke Accociates LLC	5,408,273
Mizuho Securities USA Inc	175,585,306	Gelber Group LLC	5,261,047
Man Financial Inc	163,996,003	Alaron Trading Corp	3,937,249
Refco LLC	145,429,284	Dorman Trading LLC	3,784,663
Deutsche Bank Futures Inc	143,739,415	FCT Group LLC	3,535,676
RBC Dominion Securities Corp	136,785,324	RB&H Financial Services LP	3,525,723
Wachovia Securities Inc	128,039,374		

Notes: This table presents a list of Chicago Mercantile Exchange (CME) clearing members. Firms are sorted by size according to their Adjusted Net Capital. Financial data are from reports filed to the U.S. Commodity Futures Trading Commission (CFTC) by April 30, 2002. The formula for the Adjusted Net Capital is Current Assets - Liabilities Charges Against Capital. Source: CFTC, Historical Futures Commission Merchants Financial Reports, available at www.cftc.gov/marketreports/financialdataforfcm/fcmreport_archive.html.

Table 2: Key Statistical Information on CME Contracts

	1999	2000	2001
Total Notional Value	138.3	155.0	293.9
Total Volume	200.7	231.1	411.7
Daily Volume Interest Rate	475.0	550.8	1,091.8
Equity	190.0	258.1	425.1
Foreign Exchange	94.7	76.6	89.3
Commodity	33.7	31.6	34.0
Open Interest 1-month LIBOR rate	26,299	44,307	26,849
3-month Eurodollars	3,436,723	4,439,843	7,081,654
3-month Euroyen TIBOR	66,872	61,466	30,262
S&P 500	412,799	508,300	518,046
S&P 500 (Mini)	16,808	49,254	53,809
NASDAQ-100	24,714	45,013	48,421
NASDAQ-100 (Mini)	6,400	40,996	46,849
NIKKEI	17,483	14,857	13,163
RUSSEL 2000	14,094	15,546	29,115
S&P 400 Midcap	13,463	14,807	14,774
Australian Dollar	18,815	30,486	24,938
Canadian Dollar	53,084	57,604	63,023
Euro	56,599	95,057	97,318
Japanese Yen	90,225	113,275	167,246
Mexican Peso	14,498	25,721	25,819
Pound Sterling	20,425	24,984	24,835
Swiss Franc	46,252	46,656	37,284
Feeder Cattle	28,815	23,453	18,346
Frozen Pork Bellies	5,539	2,948	2,773
Lean Hogs	49,469	43,416	26,911
Live Cattle	129,727	159,550	110,338
Milk	5,644	7,806	13,746
Random Length Lumber	3,102	5,086	2,701

Notes: This table presents the total notional value in trillions of dollars, total volume in millions of contracts, average daily volume by type of underlying assets in thousands of contracts, and year-end open interest for most Chicago Mercantile Exchange (CME) contracts. All statistics combine futures and options contracts. Sources: CME Holding 2001 annual report for notional and volume figures and CFTC Commitments of Traders Reports for open interest figures (available at www.cftc.gov/marketreports/commitmentsoftraders).

Table 3: Descriptive Statistics

	B_H	V_H	$\frac{V_H}{B_H}$	$\frac{ V_H }{B_H}$	B_C	V_C	$\frac{V_C}{B_C}$	$\frac{ V_C }{B_C}$
Panel A: 1999-2001								
Mean	98.78	0.47	0.003	0.150	267.78	-0.53	-0.002	0.074
Median	13.96	0.00	0.000	0.105	40.48	0.00	0.000	0.045
Std-Dev	226.79	43.92	0.217	0.156	546.68	71.93	0.117	0.090
Skewness	4.84	0.74	0.137	2.662	3.41	-0.89	0.205	3.494
Kurtosis	35.54	116.71	8.774	15.949	17.16	138.70	16.133	28.966
Corr(B_i, \bullet)	1.000	0.042	0.003	-0.040	1.000	-0.021	0.000	-0.010
Panel B: Year 1999								
Mean	68.22	-0.24	0.001	0.131	212.95	0.37	-0.001	0.068
Median	14.48	0.00	0.000	0.092	38.84	0.00	0.000	0.042
Std-Dev	129.94	23.69	0.190	0.137	444.41	44.96	0.106	0.082
Skewness	3.20	-0.38	0.033	2.587	3.36	0.80	-0.122	3.153
Kurtosis	15.38	55.80	8.338	14.366	16.22	71.78	12.281	20.194
Corr(B_i, \bullet)	1.000	-0.029	-0.013	-0.027	1.000	0.040	0.013	-0.045
Panel C: Year 2000								
Mean	83.37	0.96	0.006	0.165	252.22	-1.19	-0.003	0.081
Median	14.09	0.00	0.003	0.118	40.50	0.00	-0.001	0.048
Std-Dev	176.04	42.02	0.233	0.165	505.05	74.77	0.131	0.102
Skewness	3.74	-0.04	0.257	2.500	3.39	-0.80	0.472	3.788
Kurtosis	20.94	77.54	7.830	14.315	16.51	120.15	19.163	34.778
Corr(B_i, \bullet)	1.000	0.060	0.012	-0.013	1.000	-0.048	-0.008	-0.006
Panel D: Year 2001								
Mean	148.00	0.72	0.003	0.156	346.59	-0.82	-0.002	0.072
Median	13.36	0.00	0.000	0.109	41.81	0.00	0.000	0.045
Std-Dev	325.83	59.86	0.226	0.163	671.42	91.07	0.112	0.086
Skewness	3.88	0.94	0.046	2.792	3.06	-1.03	0.071	3.031
Kurtosis	21.32	85.06	9.460	17.586	13.95	109.57	11.710	19.294
Corr(B_i, \bullet)	1.000	0.047	0.004	-0.079	1.000	-0.025	0.000	0.009

Notes: This table presents descriptive statistics for house (H) and customer (C) margin accounts from 71 clearing members from the Chicago Mercantile Exchange's clearing house. There are 60 clearing members with both house and customer accounts, nine with an house account only, and two with a customer account only. For house margin accounts, we focus on the end-of-the-day performance bond (B_H), end-of-the-day variation margin (V_H), their ratio (V_H/B_H), and the ratio of the absolute variation margin and performance bond ($|V_H|/B_H$). We consider similar

variables for customer margin accounts (B_C , V_C , V_C/B_C , and $|V_C|/B_C$). For each variable, the sample size is 43,236 member/day observations for house accounts and 41,013 member/day observations for customer accounts. We compute the mean, median, standard-deviation (all in millions of dollars for the B and V variables), skewness, kurtosis, and correlation between the performance bond and the other variables. The descriptive statistics are computed for the entire sample period in Panel A (1999-2001) and then for each year separately in Panels B-D (1999, 2000, and 2001).

Table 4: Descriptive Statistics by Size Quartiles

	B_H	V_H	$\frac{V_H}{B_H}$	$\frac{ V_H }{B_H}$	B_C	V_C	$\frac{V_C}{B_C}$	$\frac{ V_C }{B_C}$
Panel A: First Quartile (Smallest 25% Performance Bonds)								
Mean	0.35	0.00	0.007	0.172	2.08	0.00	-0.001	0.080
Median	0.19	0.00	0.000	0.108	1.82	0.00	0.000	0.047
Std-Dev	0.38	0.12	0.261	0.197	1.55	0.28	0.128	0.100
Skewness	1.16	0.95	0.126	2.677	0.58	0.12	0.090	3.179
Kurtosis	3.27	43.92	9.354	14.528	2.38	24.19	12.784	19.970
Corr(B_i, \bullet)	1.000	0.03	-0.001	-0.071	1.000	-0.01	0.000	-0.123
Panel B: Second Quartile								
Mean	6.89	0.01	0.003	0.148	18.88	-0.07	-0.004	0.082
Median	6.67	0.01	0.001	0.105	15.68	0.00	0.000	0.052
Std-Dev	3.52	1.69	0.211	0.150	10.33	2.80	0.125	0.095
Skewness	0.22	-0.18	0.113	2.546	0.57	-0.13	-0.119	2.827
Kurtosis	1.99	13.50	8.199	15.067	2.04	21.45	10.091	16.002
Corr(B_i, \bullet)	1.000	-0.01	-0.023	0.058	1.000	-0.01	0.002	0.044
Panel C: Third Quartile								
Mean	32.86	-0.03	0.000	0.149	107.54	-0.26	-0.002	0.071
Median	27.19	-0.01	0.000	0.108	81.43	-0.01	0.000	0.042
Std-Dev	16.78	7.53	0.209	0.147	65.36	14.47	0.116	0.092
Skewness	0.92	-0.02	0.113	2.217	0.90	-0.80	0.913	4.820
Kurtosis	2.73	10.08	6.595	10.909	2.41	31.67	30.117	57.434
Corr(B_i, \bullet)	1.000	-0.01	-0.006	-0.014	1.000	-0.03	-0.013	0.004
Panel D: Fourth Quartile (Largest 25% Performance Bonds)								
Mean	355.04	1.90	0.003	0.134	942.58	-1.76	-0.002	0.063
Median	256.89	-0.14	-0.001	0.102	741.92	-0.01	0.000	0.039
Std-Dev	340.29	87.49	0.181	0.121	759.90	143.09	0.095	0.072
Skewness	3.03	0.32	0.174	2.006	1.81	-0.43	-0.074	2.428
Kurtosis	14.78	29.63	5.914	11.713	6.59	35.41	8.095	11.827
Corr(B_i, \bullet)	1.000	0.04	0.014	0.006	1.000	-0.02	0.000	0.152

Notes: This table presents size-based descriptive statistics for house and customer margin accounts. For house margin accounts, we focus on the end-of-the-day performance bond (B_H), end-of-the-day variation margin (V_H), their ratio (V_H/B_H), and the ratio of the absolute variation margin and performance bond ($|V_H|/B_H$). We consider similar variables for customer margin accounts (B_C , V_C , V_C/B_C , and $|V_C|/B_C$). For each variable, the sample size is 43,236 member/day observations for house accounts and 41,013 member/day observations for customer

accounts. We compute the mean, median, standard-deviation (all in millions of dollars for the B and V variables), skewness, kurtosis, and correlation between the performance bond and the other variables. The descriptive statistics are computed for four quartiles, from the smallest 25% performance bonds in Panel A to the largest 25% performance bonds in Panel D.

Table 5: Performance Bonds and V/B Ratios

		House Accounts				Customer Accounts			
from	to	$E(B \mid \bullet)$	$\text{Max}(B \mid \bullet)$	Obs	Freq	$E(B \mid \bullet)$	$\text{Max}(B \mid \bullet)$	Obs	Freq
$-\infty$	-0.7	33.5	1,604	234	0.54%	87.5	842	32	0.08%
-0.7	-0.6	37.6	620	164	0.38%	144.2	2,851	27	0.07%
-0.6	-0.5	69.5	1,989	338	0.78%	146.9	3,851	59	0.14%
-0.5	-0.4	74.6	1,930	620	1.43%	144.7	3,625	151	0.37%
-0.4	-0.3	75.9	2,233	1,302	3.01%	225.1	3,639	357	0.87%
-0.3	-0.2	101.9	2,183	2,690	6.22%	292.5	4,140	1,080	2.63%
-0.2	-0.1	107.6	2,280	5,663	13.10%	278.8	4,421	3,455	8.42%
-0.1	0	98.7	2,440	10,938	25.30%	264.4	4,508	15,656	38.17%
0	0.1	97.3	2,608	10,082	23.32%	269.0	4,815	15,598	38.03%
0.1	0.2	110.7	2,636	5,555	12.85%	289.4	4,173	3,127	7.62%
0.2	0.3	109.3	2,291	2,819	6.52%	248.7	4,086	914	2.23%
0.3	0.4	102.1	2,134	1,424	3.29%	256.1	3,719	312	0.76%
0.4	0.5	65.2	1,979	627	1.45%	195.3	3,671	131	0.32%
0.5	0.6	56.7	1,916	340	0.79%	112.6	1,416	66	0.16%
0.6	0.7	53.2	2,152	160	0.37%	234.3	3,302	17	0.04%
0.7	$+\infty$	24.0	845	280	0.65%	47.4	170	31	0.08%

Notes: This table presents summary statistics for the performance bonds and the histograms of the ratio of the variation margin (V) and performance bond (B). $E(B \mid \bullet)$ denotes the expected value of the performance bond B conditional on B being within a given range (e.g., between $-\infty$ and -0.7 in the first row). $\text{Max}(B \mid \bullet)$ denotes the maximum value of the performance bond B conditional on B being within a given range (e.g., between -0.7 and -0.6 in the second row). Both $E(B \mid \bullet)$ and $\text{Max}(B \mid \bullet)$ are measured in millions of dollars. Obs is the number of observations in each range. Freq is the frequency in percent in each range.

Table 6: EVT-based Tail Analysis

θ	n	k	s.e.(k)	σ	s.e.(σ)
Panel A: House Accounts					
-0.7	233	0.0107	0.0648	0.2243	0.0207
-0.8	142	0.1379	0.0723	0.2695	0.0297
-0.9	90	0.2492	0.0791	0.3059	0.0395
Panel B: Customer Accounts					
-0.7	32	0.1321	0.1534	0.1672	0.0389
-0.8	15	0.2658	0.1896	0.1946	0.0609
-0.9	8	0.1850	0.2882	0.1562	0.0705

Notes: This table presents the maximum-likelihood coefficient estimates of a generalized Pareto distribution $G(V/B)$, namely a tail shape parameter k and a scale parameter σ . Estimation is done alternatively for house accounts in Panel A and customer accounts in Panel B. The exceedances are defined using three different thresholds, $\theta = -0.7, -0.8, -0.9$. n is the number of exceedances used in the estimation, i.e., number of V/B ratios smaller than θ . s.e.(k) and s.e.(σ) denote asymptotic standard errors of the tail shape and scale parameters respectively.

Table 7: Insurance Price Estimates

θ	λ	p_{pay}	p_{max}	p_{def}	bp/yr	s.e.(%)	Value	DefMax
Panel A: Base Case								
-0.7	0.0052	0.0011	0.0004	0.0218	2.18	0.18	305.9	3,122
-0.8	0.0032	0.0010	0.0003	0.0192	1.87	0.19	262.2	1,859
-0.9	0.0020	0.0011	0.0003	0.0151	2.27	0.17	318.2	1,527
Panel B: No Policy Payout Limit								
-0.7	0.0052	0.0011	0.0000	0.0218	-	0.24	612.9	3,122
-0.8	0.0032	0.0010	0.0000	0.0192	-	0.22	403.7	1,859
-0.9	0.0020	0.0011	0.0000	0.0151	-	0.22	508.1	1,527
Panel C: No Deductible								
-0.7	0.0052	0.0218	0.0011	0.0218	11.04	0.07	1,547.2	3,122
-0.8	0.0032	0.0192	0.0010	0.0192	11.77	0.07	1,649.9	1,859
-0.9	0.0020	0.0151	0.0011	0.0151	10.32	0.07	1,446.5	1,527
Panel D: No Policy Payout Limit and No Deductible								
-0.7	0.0052	0.0218	0.0000	0.0218	-	0.10	2,160.0	3,122
-0.8	0.0032	0.0192	0.0000	0.0192	-	0.08	2,023.6	1,859
-0.9	0.0020	0.0151	0.0000	0.0151	-	0.09	1,968.9	1,527

Notes: This table presents the estimated insurance premium for several threshold levels θ . The λ parameter is the annualized Poisson arrival rate of trigger events that cause account loss in the tail range, p_{pay} is the probability of any payout event over term of policy, p_{max} is the probability of policy limit payout over term of policy, p_{def} is the probability of at least one firm defaults during policy term, bp/yr denotes the Monte Carlo estimate of actuarially fair price expressed in basis points per year on policy maximum payout, paid in advance at premium payment interval, and s.e.(%) is the Monte Carlo sampling error of price expressed as proportion of estimated fair price. Value gives the present value of the insurance liability (and premiums) in thousands of dollars, i.e., policy limit \times bp/yr \times discount factor for three years. DefMax is the largest default in millions of dollars occurring in the 40,000 simulations. In Panel A, we consider the following base case: a three-year policy, with a \$500 million deductible, a \$500 million payout limit, a deductible reset interval of 0.25 years, a premium payment interval of 0.25 years, $\rho_{\theta} = \rho_z = 0.5$, $\pi_1 = 0.2$, $\pi_2 = 0.5$, $r = 5\%$, and $M = 60$. In Panels B-D, we consider several variations of the base case.

Table 8: Comparative Statics Analysis

	λ	P_{pay}	P_{max}	P_{def}	bp/yr	s.e.(%)	Value	DefMax
Base Case	0.0032	0.0010	0.0003	0.0192	1.87	0.19	262.2	1,859
$\rho_\theta = 0.75$	0.0032	0.0013	0.0005	0.0153	2.64	0.16	369.4	1,608
$\rho_\theta = 0.25$	0.0032	0.0009	0.0003	0.0216	1.72	0.20	241.3	2,487
$\rho_z = 0.75$	0.0032	0.0010	0.0004	0.0173	1.99	0.19	278.9	2,555
$\rho_z = 0.25$	0.0032	0.0009	0.0002	0.0211	1.53	0.20	214.2	1,652
$\rho_\theta = \rho_z = 0$	0.0032	0.0008	0.0003	0.0286	1.61	0.21	225.8	2,406
$\pi_1 = 0.30$	0.0032	0.0017	0.0006	0.0218	3.32	0.15	466.0	1,859
$\pi_1 = 0.10$	0.0032	0.0005	0.0002	0.0143	1.07	0.25	150.1	1,859
$\pi_2 = 0.75$	0.0032	0.0010	0.0003	0.0192	1.87	0.19	262.2	1,859
$\pi_2 = 0.25$	0.0032	0.0010	0.0003	0.0192	1.87	0.19	262.2	1,859
$M = 80$	0.0032	0.0013	0.0004	0.0207	2.58	0.16	361.5	1,947
$M = 40$	0.0032	0.0006	0.0003	0.0155	1.52	0.23	212.8	2,176

Notes: This table presents the results of a comparative static analysis of the estimated insurance premium. The λ parameter is the annualized Poisson arrival rate of trigger events that cause account loss in the tail range, p_{pay} is the probability of any payout event over term of policy, p_{max} is the probability of policy limit payout over term of policy, p_{def} is the probability of at least one firm defaults during policy term, bp/yr denotes the Monte Carlo estimate of actuarially fair price expressed in basis points per year on policy maximum payout, paid in advance at premium payment interval, and s.e.(%) is the Monte Carlo sampling error of price expressed as proportion of estimated fair price. Value gives the present value of the insurance liability (and premiums) in thousands of dollars, i.e., policy limit \times bp/yr \times discount factor for three years. DefMax is the largest default in millions of dollars occurring in the 40,000 simulations. The first row displays the base case results with a threshold $\theta = -0.8$, a three-year policy, a \$500 million deductible, a \$500 million payout limit, a deductible reset interval of 0.25 years, a premium payment interval of 0.25 years, $\rho_\theta = \rho_z = 0.5$, $\pi_1 = 0.2$, $\pi_2 = 0.5$, $r = 5\%$, and $M = 60$. In subsequent rows, we consider several variations of the base case where the successive shocks are displayed in the first column.

Table 9: Cost of the Federal Reserve Guarantee

θ	λ	p_{pay}	p_{def}	s.e.(%)	Value	DefMax
-0.7	0.0052	0.0005	0.0218	0.31	382.5	3,122
-0.8	0.0032	0.0004	0.0192	0.30	202.9	1,859
-0.9	0.0020	0.0005	0.0151	0.30	265.2	1,527

Notes: This table presents the estimated insurance premium for several threshold levels θ . The λ parameter is the annualized Poisson arrival rate of trigger events that cause account loss in the tail range, p_{pay} is the probability of any payout event over term of policy, p_{def} is the probability of at least one firm defaults during policy term, and s.e.(%) is the Monte Carlo sampling error of price expressed as proportion of estimated fair price. Value gives the present value of the insurance liability (and premiums) in thousands of dollars, i.e., policy limit \times bp/yr \times discount factor for three years. DefMax is the largest default in millions of dollars occurring in the 40,000 simulations. The features of the contract and the value of the key parameters are as follows: a three-year policy, a \$821 million deductible, no payout limit, a deductible reset interval of 0.25 years, a premium payment interval of one year, $\rho_{\theta} = \rho_z = 0.5$, $\pi_1 = 0.2$, $\pi_2 = 0.5$, $r = 5\%$, and $M = 60$.

Table 10: Estimation Results When the Black Monday is Included

Panel A: EVT-based Tail Analysis

θ	n	k	s.e.(k)	σ	s.e.(σ)
-0.7	238	-0.3153	0.0853	0.1873	0.0197
-0.8	147	-0.3201	0.1089	0.2147	0.0288
-0.9	95	-0.3403	0.1375	0.2395	0.0402

Panel B: Insurance Price Estimates

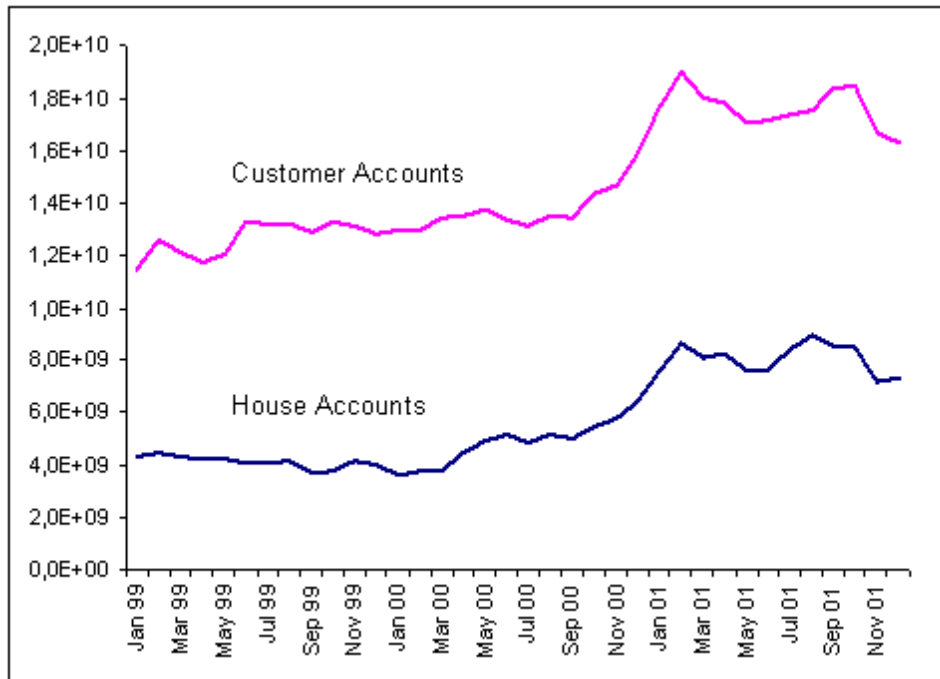
θ	λ	p_{pay}	p_{max}	p_{def}	bp/yr	s.e.(%)	Value	DefMax
-0.7	0.0053	0.0030	0.0016	0.0239	7.37	0.10	1,033.2	10,962
-0.8	0.0033	0.0029	0.0015	0.0186	7.25	0.10	1,015.8	13,623
-0.9	0.0021	0.0030	0.0018	0.0163	7.39	0.10	1,036.4	6,547

Panel C: Value of the Federal Reserve Guarantee

θ	λ	p_{pay}	p_{def}	s.e.(%)	Value	DefMax
-0.7	0.0053	0.0021	0.0239	0.22	2,657.3	10,962
-0.8	0.0033	0.0020	0.0185	0.21	2,703.6	13,623
-0.9	0.0021	0.0019	0.0163	0.16	3,055.1	6,547

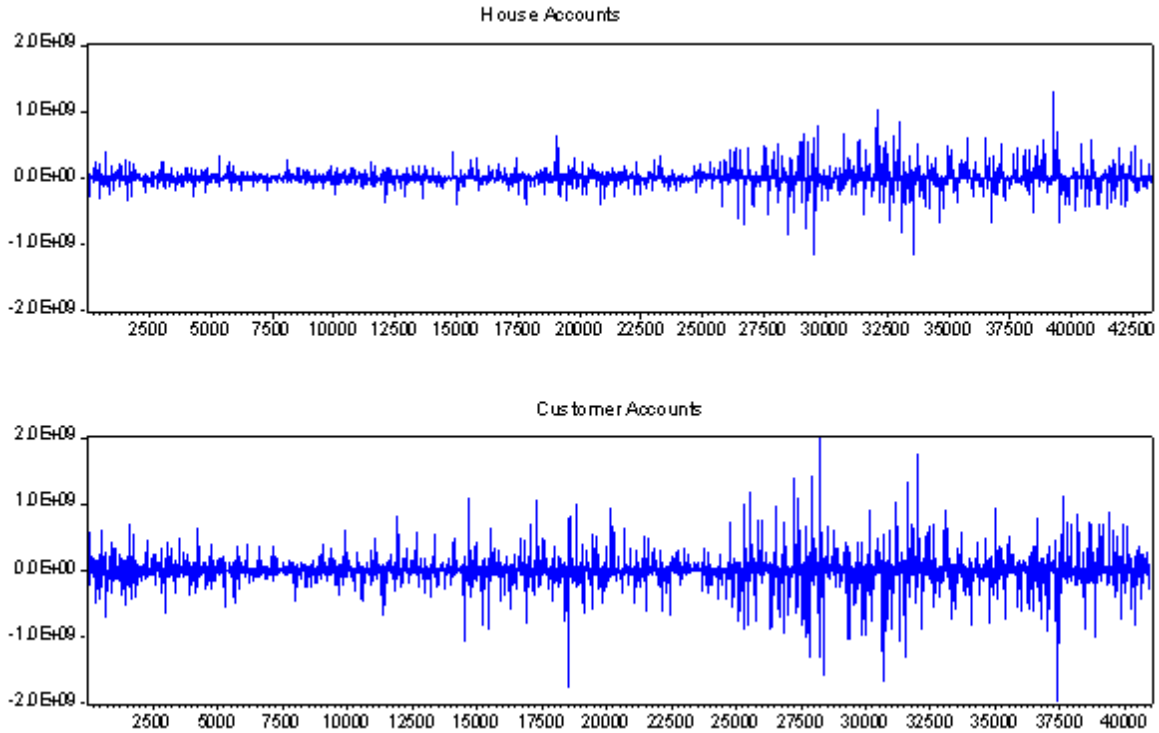
Notes: This table presents the estimation results for the tail analysis (Panel A), the insurance price (Panel B), and the value of the Federal Reserve guarantee (Panel C) when the sample includes the data from the Black Monday of October 19th, 1987. Panel A replicates Panel A in Table 6. The analysis is conducted for house accounts only. The panel presents the maximum-likelihood coefficient estimates of a generalized Pareto distribution $G(V/B)$, namely a tail shape parameter k and a scale parameter σ . The exceedances are defined using three different thresholds, $\theta = -0.7, -0.8, -0.9$. n is the number of exceedances used in the estimation, i.e., number of V/B ratios that are smaller than θ . $s.e.(k)$ and $s.e.(\sigma)$ denote asymptotic standard errors of the tail shape and scale parameters respectively. Panel B replicates Panel A in Table 7. The panel presents the estimated insurance premium for several threshold levels. The λ parameter is the annualized Poisson arrival rate of trigger events that cause account loss in the tail range, p_{pay} is the probability of any payout event over term of policy, p_{max} is the probability of policy limit payout over term of policy, p_{def} is the probability of at least one firm defaults during policy term, bp/yr denotes the Monte Carlo estimate of actuarially fair price expressed in basis points per year on policy maximum payout, paid in advance at premium payment interval, and s.e.(%) is the Monte Carlo sampling error of price expressed as proportion of estimated fair price. Value gives the present value of the insurance liability (and premiums) in thousands of dollars, i.e., policy limit \times bp/yr \times discount factor for three years. DefMax is the largest default in millions of dollars occurring in the 40,000 simulations. We consider the following base case: a three-year policy, with a \$500 million deductible, a \$500 million payout limit, a deductible reset interval of 0.25 years, a premium payment interval of 0.25 years, $\rho_{\theta} = \rho_z = 0.5$, $\pi_1 = 0.2$, $\pi_2 = 0.5$, $r = 5\%$, and $M = 60$. Panel C replicates Table 9. The features of the contract and the value of the key parameters are as in Panel B except that there are a \$821 million deductible and no payout limit.

Figure 1: Daily Total Performance Bond



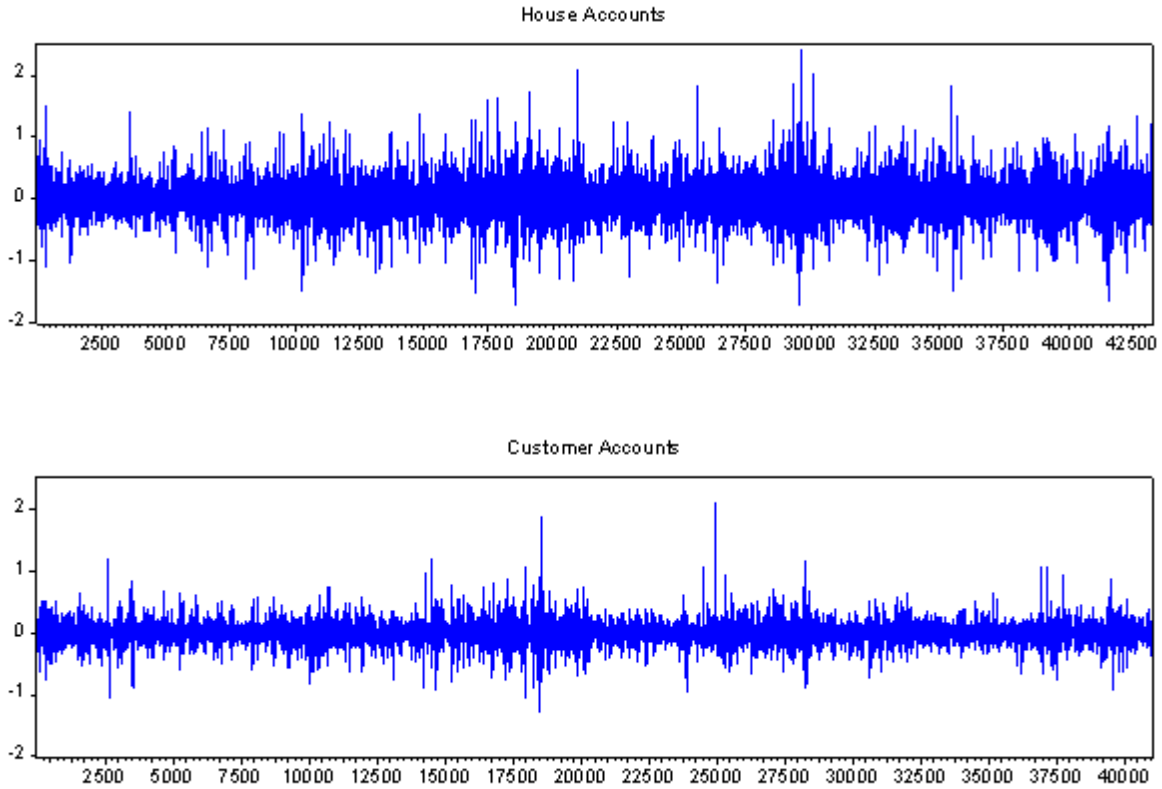
Notes: This figure displays the cumulative performance bond (in dollars) across all clearing members ($\sum_i B_{it}$) averaged over each month. The lower line is for house accounts and the upper line is for customer accounts.

Figure 2: **Daily Variation Margins**



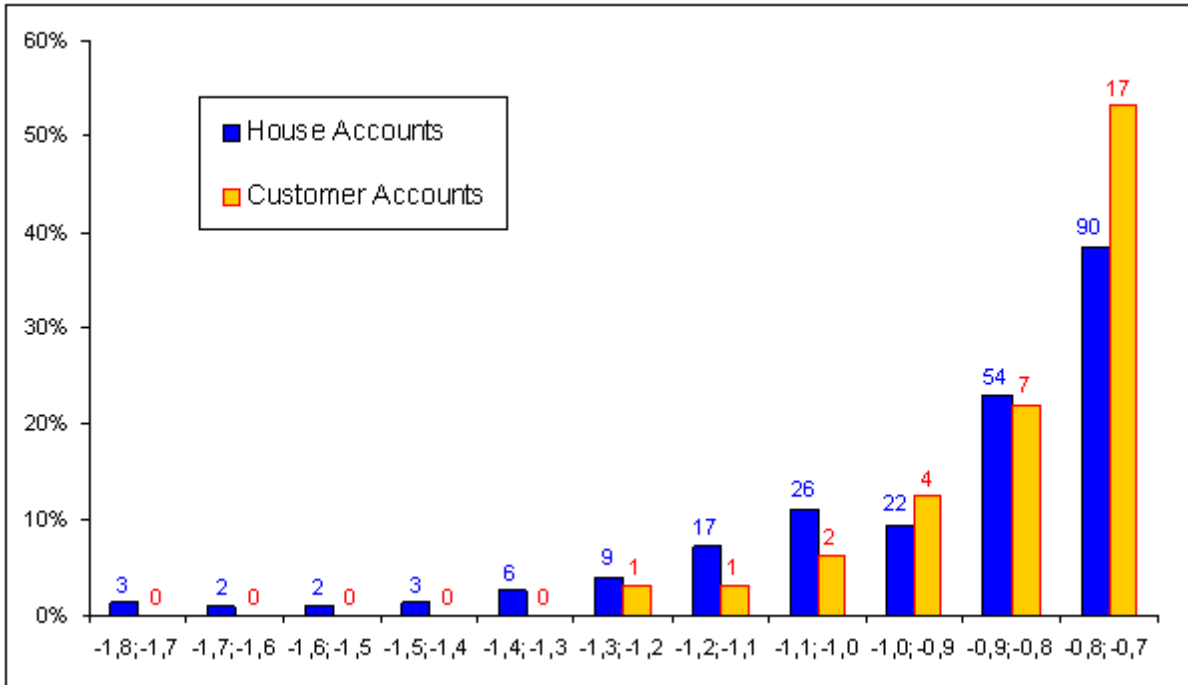
Notes: This figure displays all daily variation margins (V_H and V_C , in dollars) between January 4th, 1999 and December 31st, 2001. The top panel is for house accounts and the lower panel is for customer accounts. On each sample day, we stack all clearing members' variation margins. For instance, the first 63 observations in Panel A are the daily variation margins of the 63 clearing members posting margins on January 4th, 1999. The following 63 observations are the daily variation margins of the 63 clearing members posting margins on January 5th, 1999, and so on. The total number of observations is 43,236 observations in Panel A and 41,013 observations in Panel B.

Figure 3: Ratio of the Variation Margins and Performance Bonds



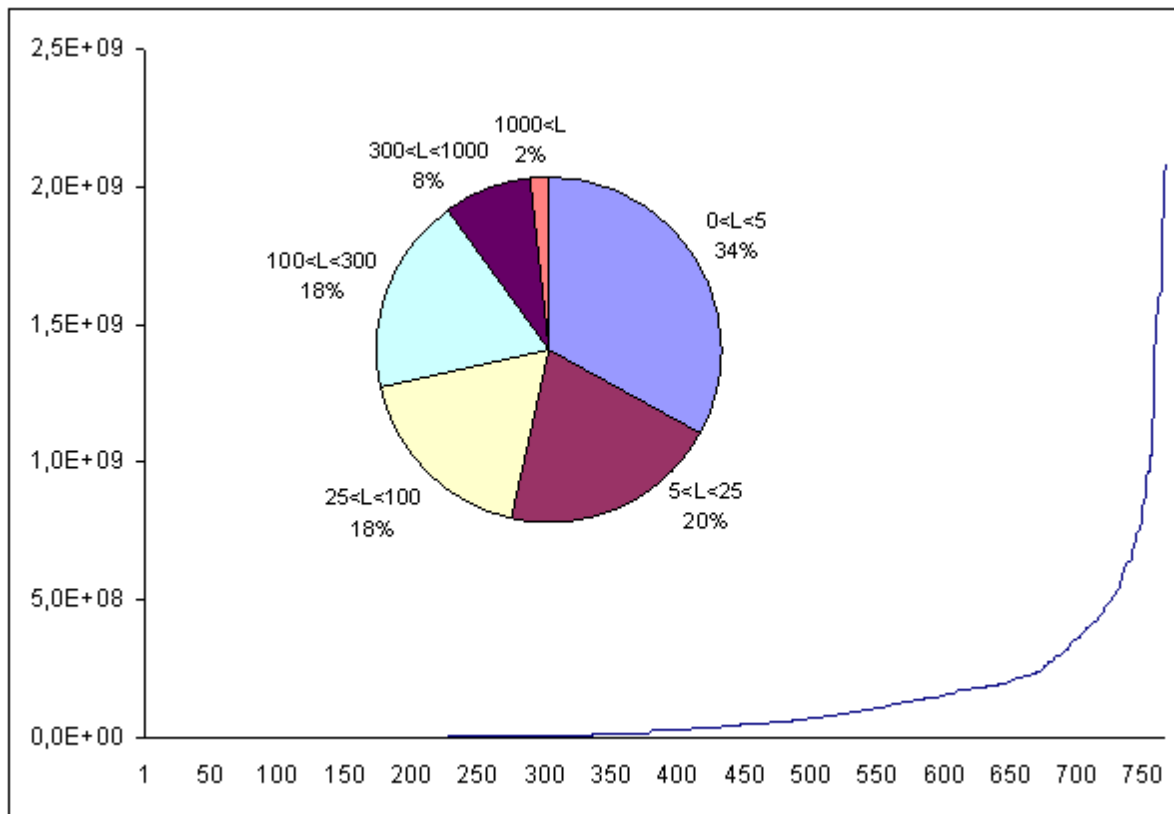
Notes: This figure displays the ratio of the daily variation margins over the daily performance bond for all clearing members between January 4th, 1999 and December 31st, 2001. The top panel is for house accounts (V_H/B_H) and the lower panel is for customer accounts (V_C/B_C). On each sample day, we stack all clearing members' V/B ratios. For instance, the first 63 observations in Panel A are the daily variation margins of the 63 clearing members posting margins on January 4th, 1999. The following 63 observations are the daily variation margins of the 63 clearing members posting margins on January 5th, 1999, and so on. The total number of observations is 43,236 observations in Panel A and 41,013 observations in Panel B.

Figure 4: **Left-Tail Histogram of V/B for House and Customer Accounts**



Notes: The bars represent the frequency of observations in a particular bucket, i.e., number of observations in this bucket (displayed above each bar) divided by the total number of observations in the tail. The dark shaded bars are for house accounts (V_H/B_H) and the light shaded bars are for customer accounts (V_C/B_C).

Figure 5: Simulated Default Losses



Notes: This figure displays the value and the frequency of the simulated total default losses obtained from 40,000 simulated paths. In this experiment, we use our base case with $\theta = -0.8$ (refer to caption of Table 7 for details). The number of paths experiencing no defaults is 39,232. The exponentially increasing line shows the 768 non-zero total default losses (in dollars) sorted from smallest to largest. The superimposed pie chart displays the size distribution of the non-zero total default losses, labelled L and measured in millions of dollars.